



## LED Complete Taillamps

*Part Number:* 6027

*Application:* 1940 ford



**Product Details:** Complete taillamp assembly with very bright and visible LEDs for the stop, tail, and turn signal function. LEDs feature a wide viewing angle of 100 degrees as well as cool operation and long life. This lamp is designed to bolt into a 1940 Ford fender in place of the original taillight. Every single component in our '40 Ford taillamp has been re-engineered for fit and function. The bezel has been re-shaped to fit tightly to the fender. Also, the external screw hole has been eliminated for a clean look. The taillamp bucket has been re-shaped so the exiting LED light is shined towards the following car rather than up at the sky like the original. 12 volt required.

**Construction:** Includes composite taillamp bucket, stainless steel studs, nuts, and washers, custom designed acrylic lens to maximize the LEDs visibility, lens has dual, built-in reflectors for lights off safety, pressure cast and chrome plates bezel, custom molded taillamp to body seal. Completely assembled in our Indiana factory.

**LEDs:** 14 per lamp, high intensity LEDs, 100 degree viewing angle, rugged four pin design.

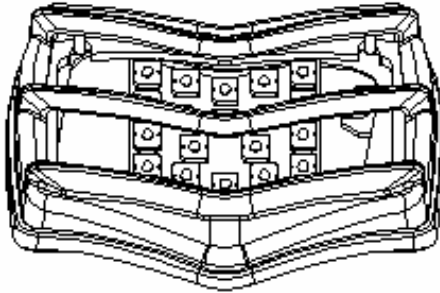
**Kit Contents:** (2) LED complete taillamp assemblies, (4) solderless connectors, (2) LED to car electrical harness, (2) custom molded taillamp to body seal, installation instructions.



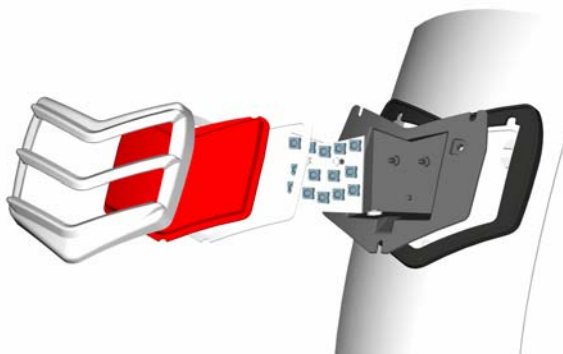
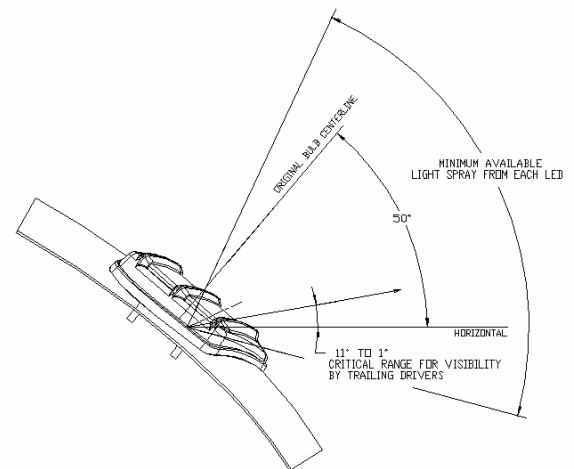


## LED Complete Taillamps

### 1940 Ford Continued...



*Above and right: We have solved the “angle problem” of the '40 Ford taillight. Above: From the trailing driver's perspective, good planning ensures all 14 leds are visible. Right: The original light shown at the moon! Our re-angled bucket and wide angle LEDs ensure that your '40 will be seen.*



*Above and right: We computer designed every component from scratch ensuring the ultimate design for proper fender fit, component quality and maximum light output. Our lights looks as good ON as they do OFF!*

