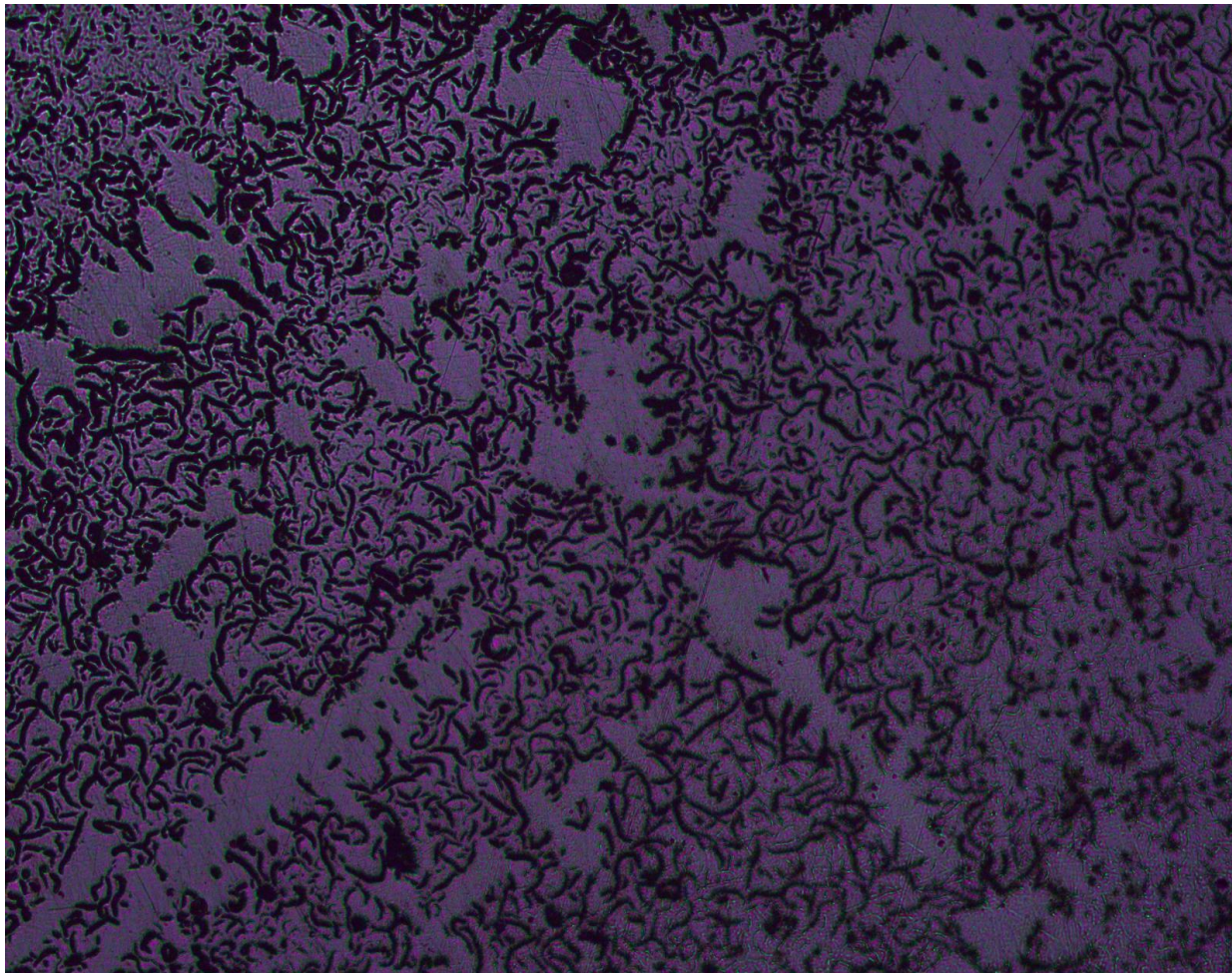


LVVTA SUPPLIED SAMPLE CASTING ANALYSIS



Cut specimen was analysed for residual magnesium and microstructure

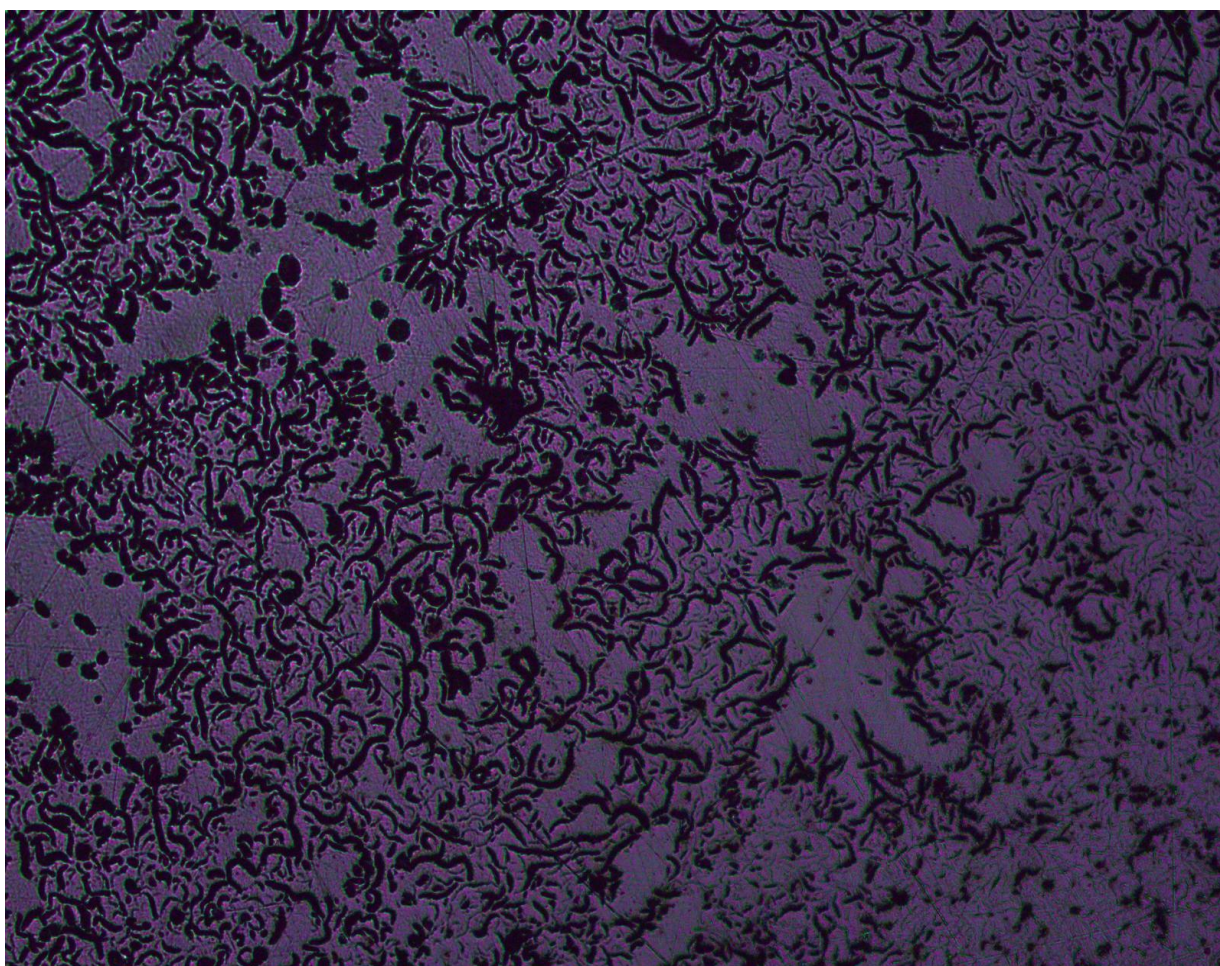
Residual Mg- 0.04%



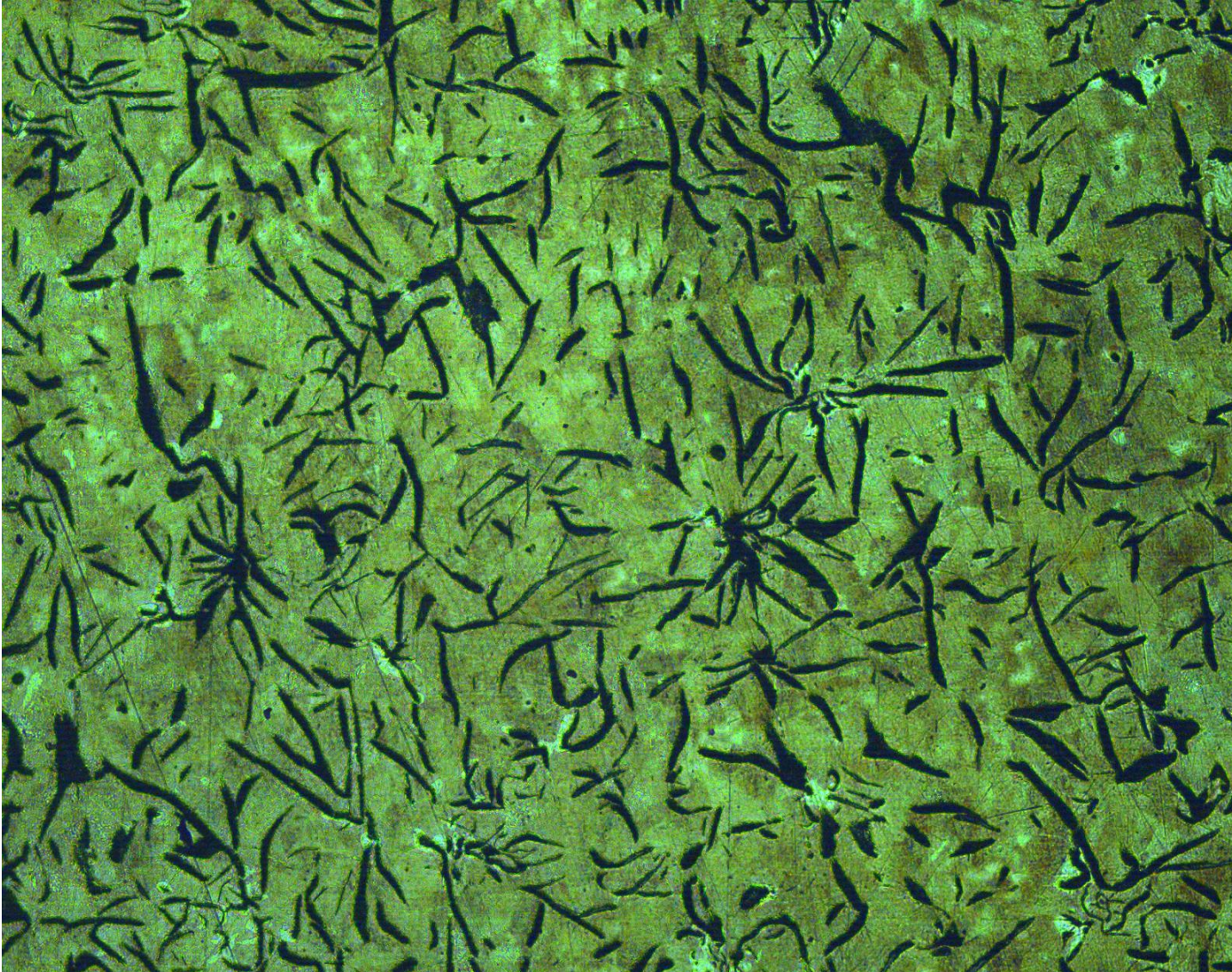
Distribution of Interdentritic flaky graphites and Random flake graphite

Possible causes:
Poor melting, treatment, inoculation and pouring practices

Remarks:
The sample analyzed will not meet ductile iron mechanical properties and inferior to quality grade grey iron.



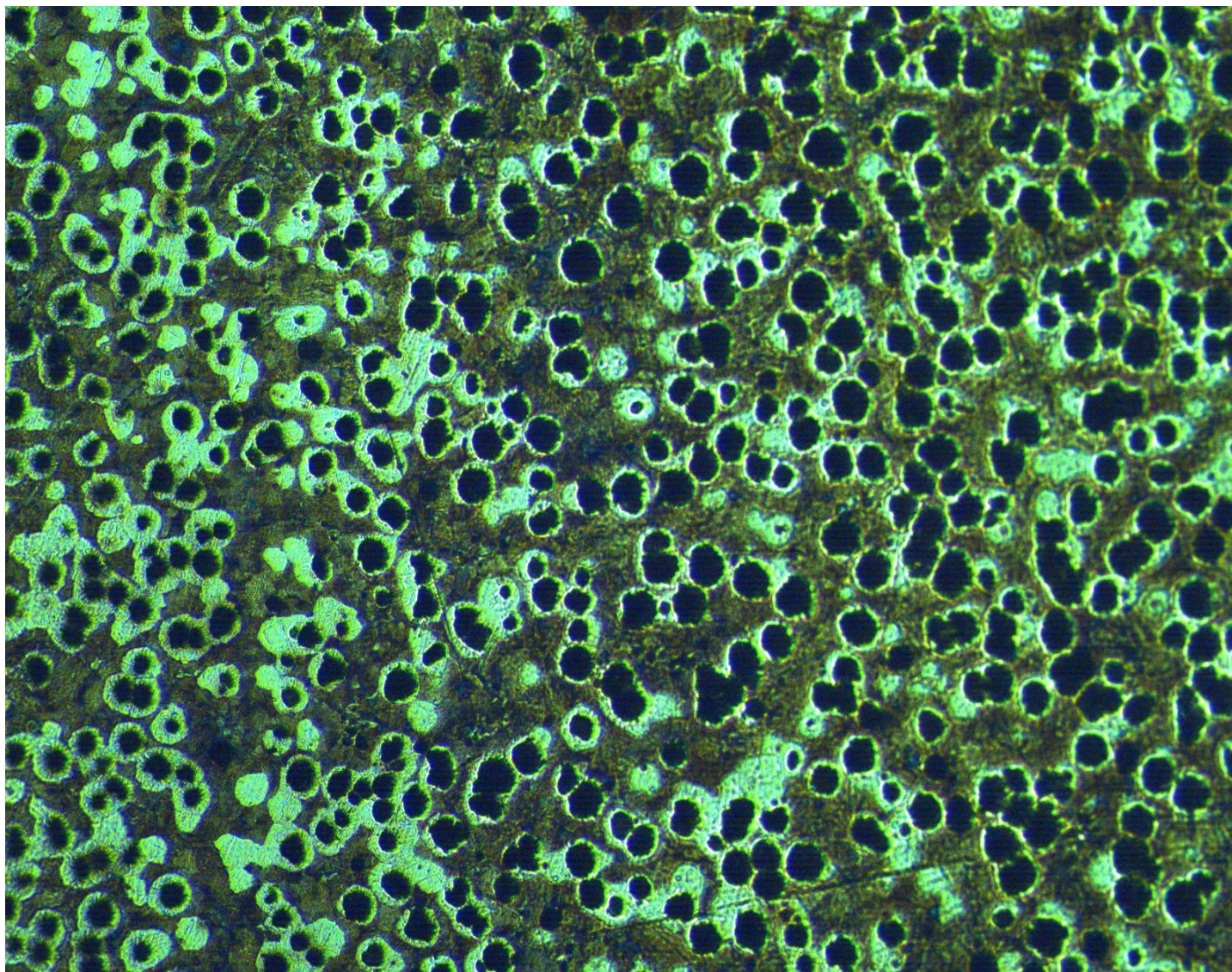
MASPORT FOUNDRIES CASTINGS MICROSTRUCTURE



Grey cast iron- Grade 225

Type A, Random flake distribution
in Perlite matrix (Above 97%)

Product:
Hub Brake drum



Ductile iron- 500/7 grade

Graphite nodules in
ferrite and Pearlite matrix

Product:
Flange Adaptor