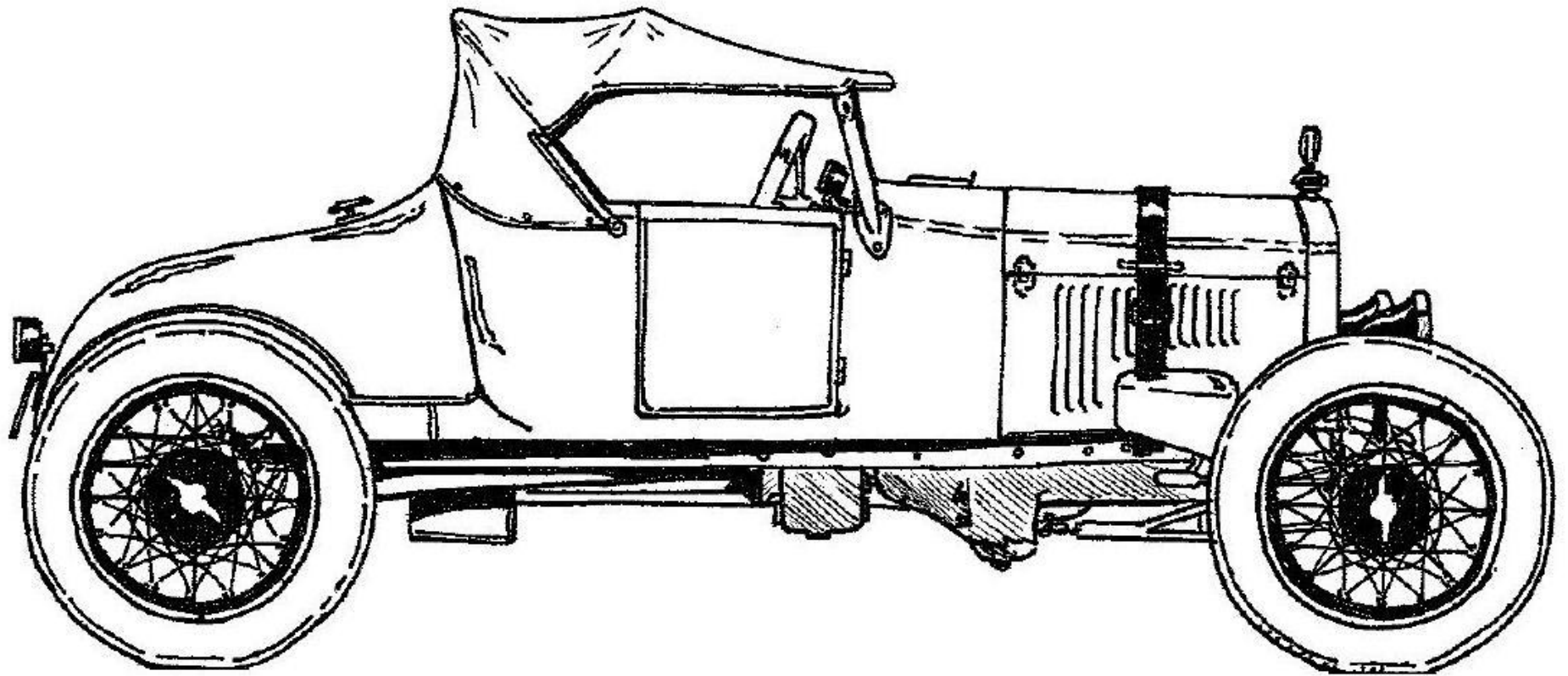
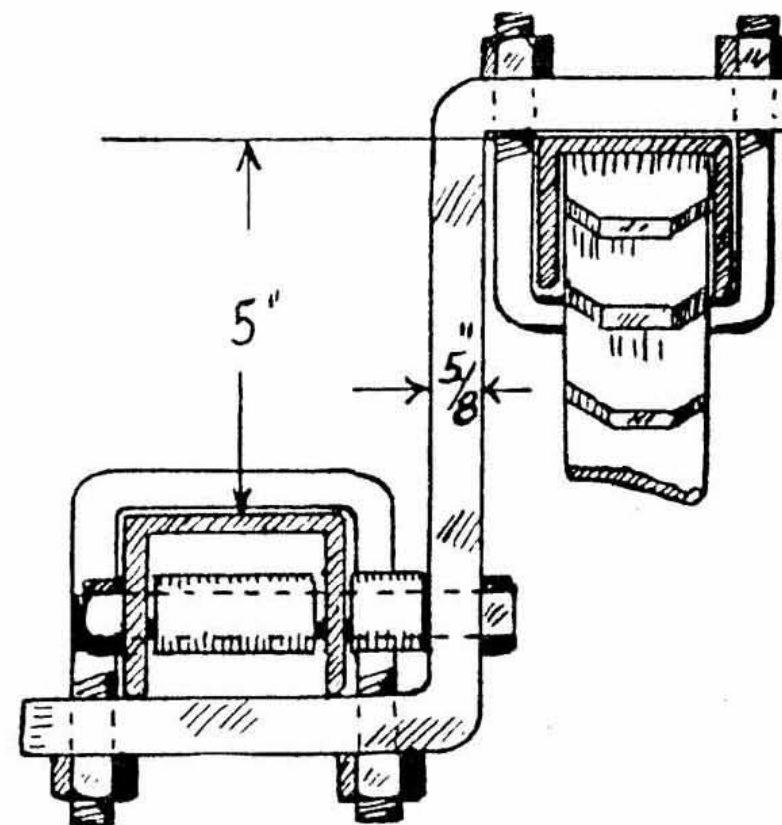
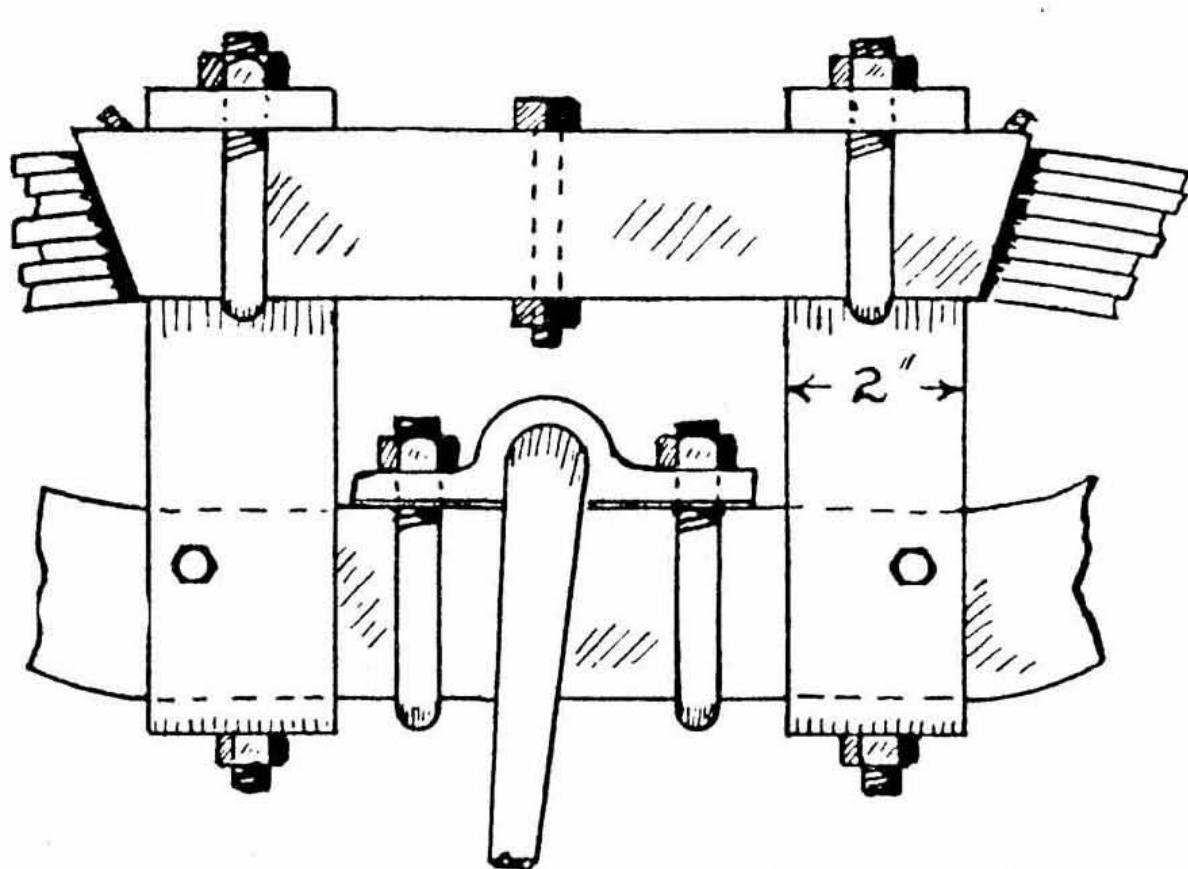


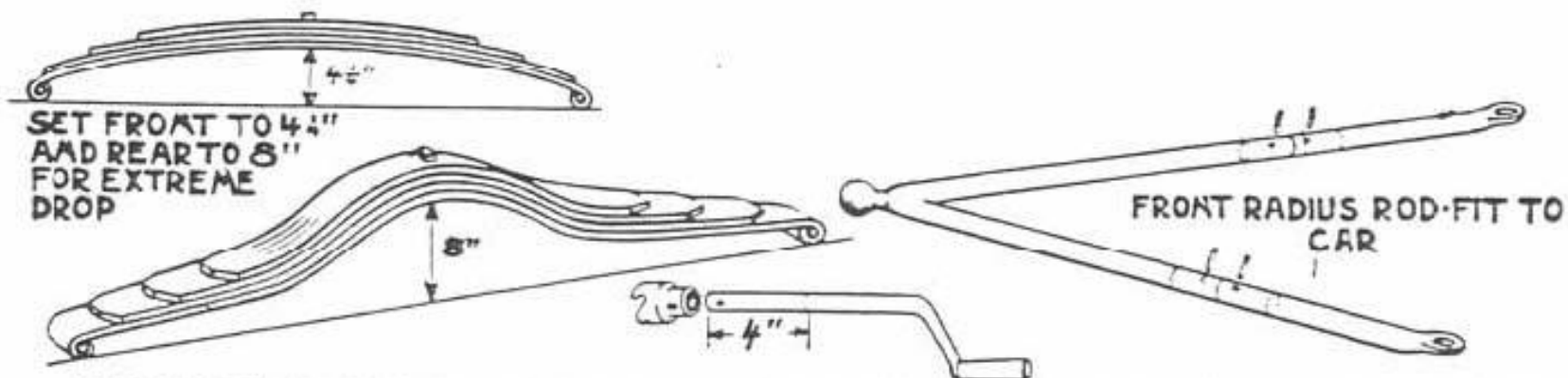
# NWVS and RCMTC

"Shop Talk" on Lowering Methods



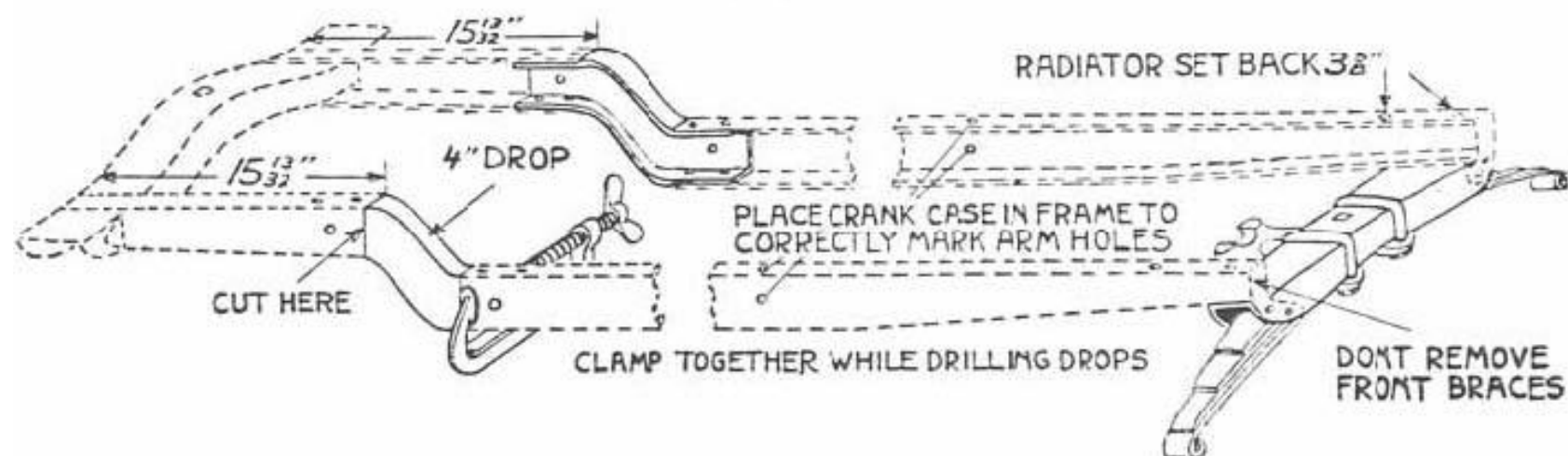


Moves Front Spring Forward



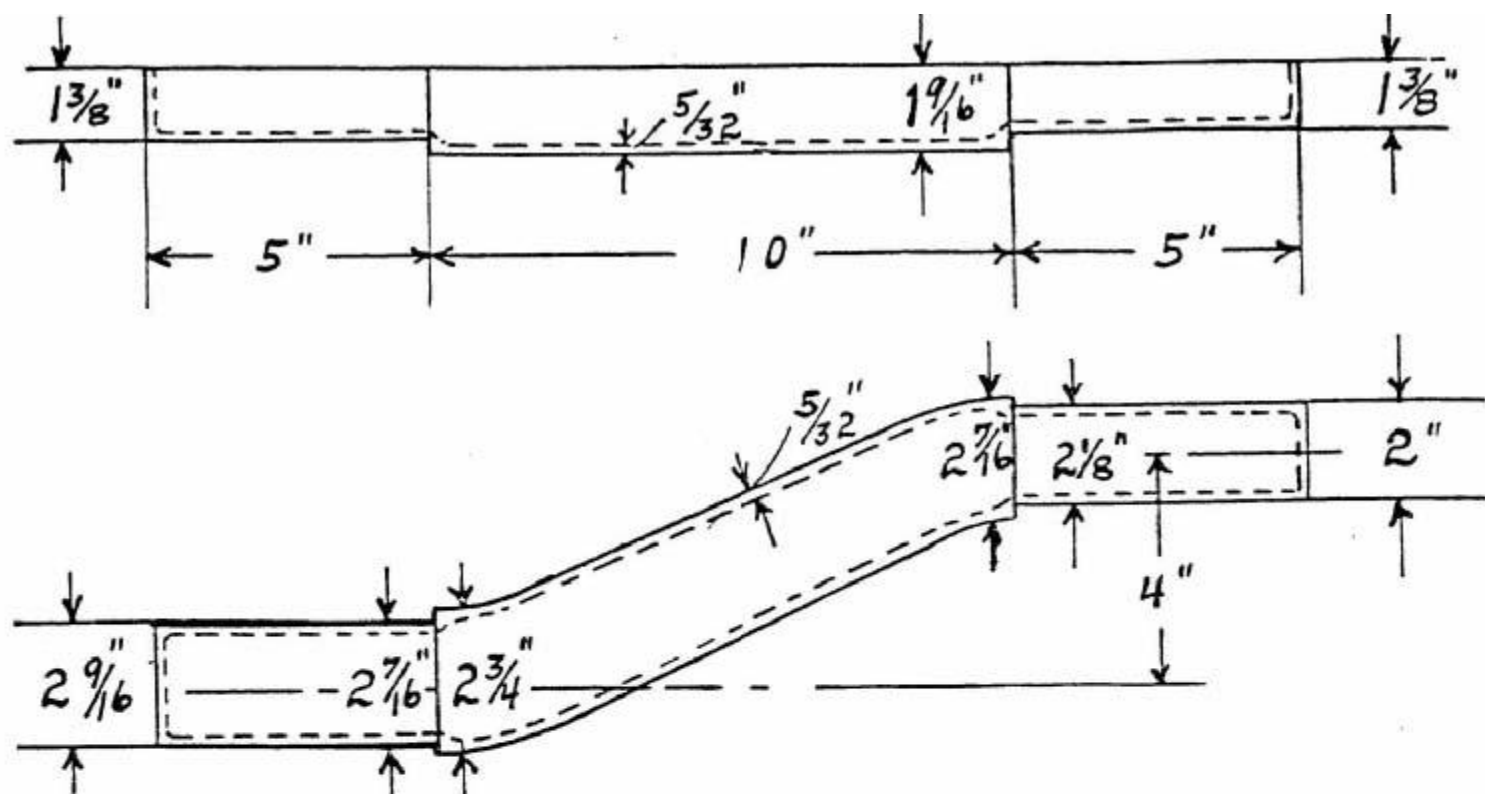
FILE CUT EDGE OF FRAME. CLAMP "S" DROPS IN POSITION AND DRILL ONE  $\frac{5}{16}$ " HOLE ON EACH END OF FIXTURES AS SHOWN. RIVET THESE FIRST. THEN DRILL AND RIVET TWO  $\frac{1}{4}$ " HOLES ON BOTH TOPS AND BOTTOMS SPACED ABOUT 2" APART. USE HOT RIVETS IF POSSIBLE. CARE SHOULD BE TAKEN TO KEEP BOTH SIDES PARALLEL WHEN ASSEMBLING. IF BOLTS ARE TO BE USED, USE  $\frac{5}{16}$ " BOLTS ON TOPS AND BOTTOMS AND  $\frac{3}{8}$ " BOLT ON SIDES. A.L.A.M. PREFERABLE. BEFORE RIVETING CROSS MEMBER IN FRAME MAKE SURE THAT SPRING FITS IN CHANNEL. IF NOT GRIND CHANNEL OR SPRING TO FIT. NOW REMOVE REGULAR FORD CROSS MEMBER BUT LEAVE BRACES ON FRAME. RIVET TO FRAME AND BRACES.

#### Resetting Springs and Radius Rods

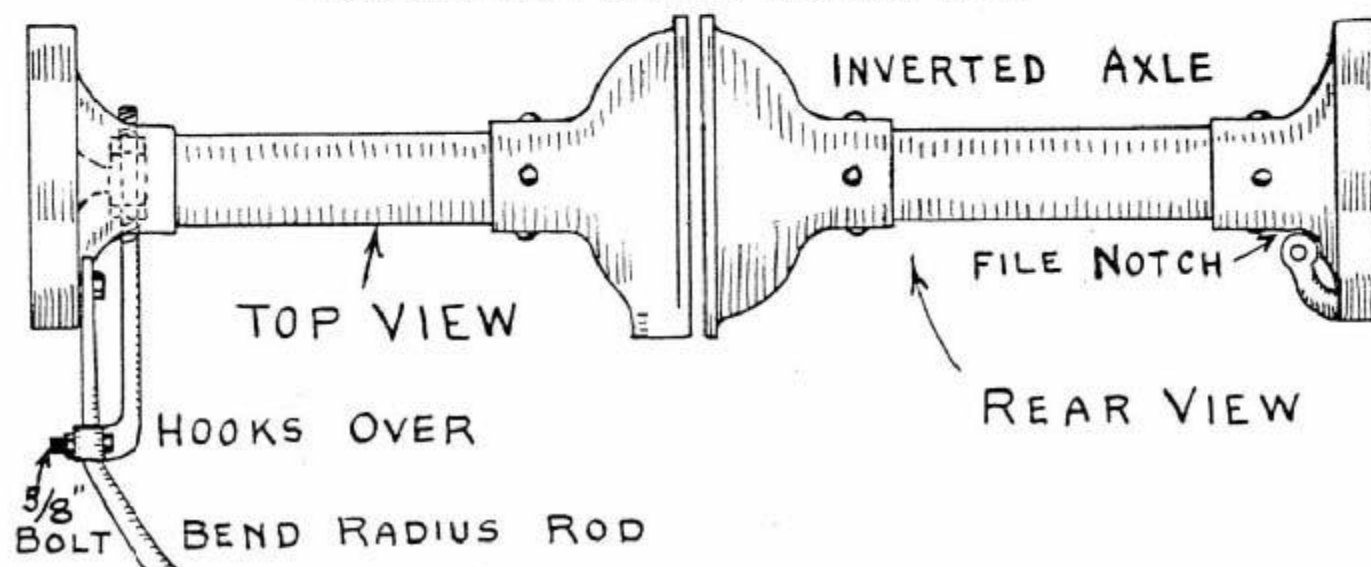


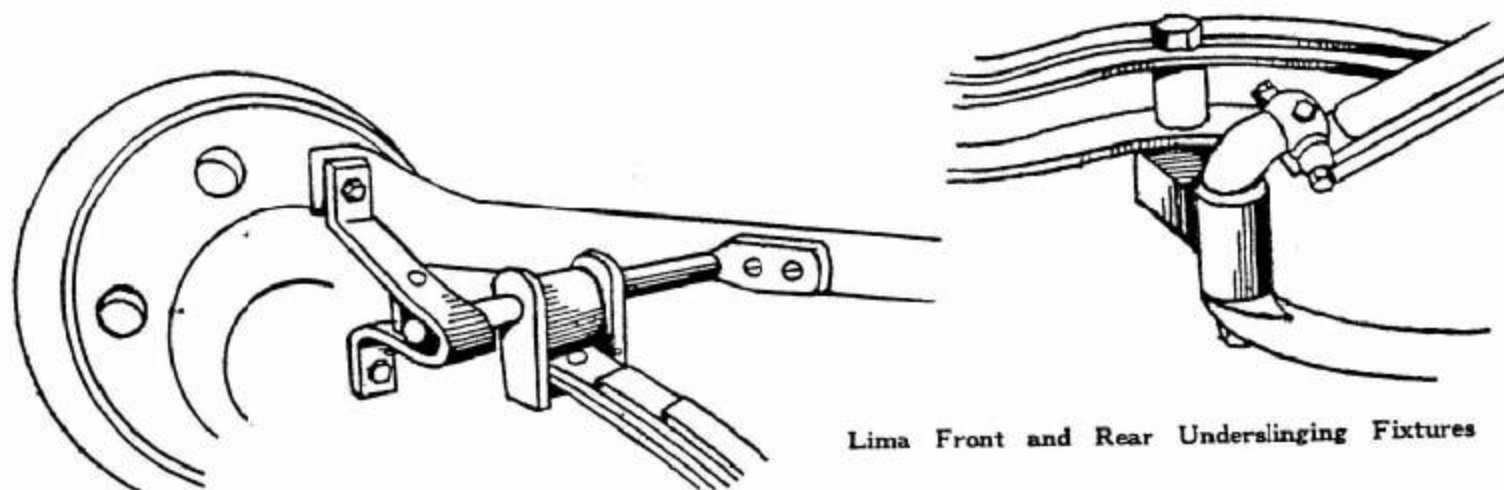
CLAMP MOTOR SUPPORT UNDER FRONT SPRING. AND FASTEN REAR SPRING TO FRAME. SET UP ON AXLES. BOLT DOWN CRANK CASE. CUT OFF THE ENDS OF RADIUS ROD AND LENGTHEN WITH THE ENDS OF ANOTHER. PIN AND BRAZE JOINTS. WELD 4" TO STARTING CRANK. RESET SPRINGS AS SHOWN FOR MAXIMUM DROP. MOVE BRAKE LEVER  $3\frac{5}{8}$ " TO REAR.

#### Cutting and Lowering Chassis Frame

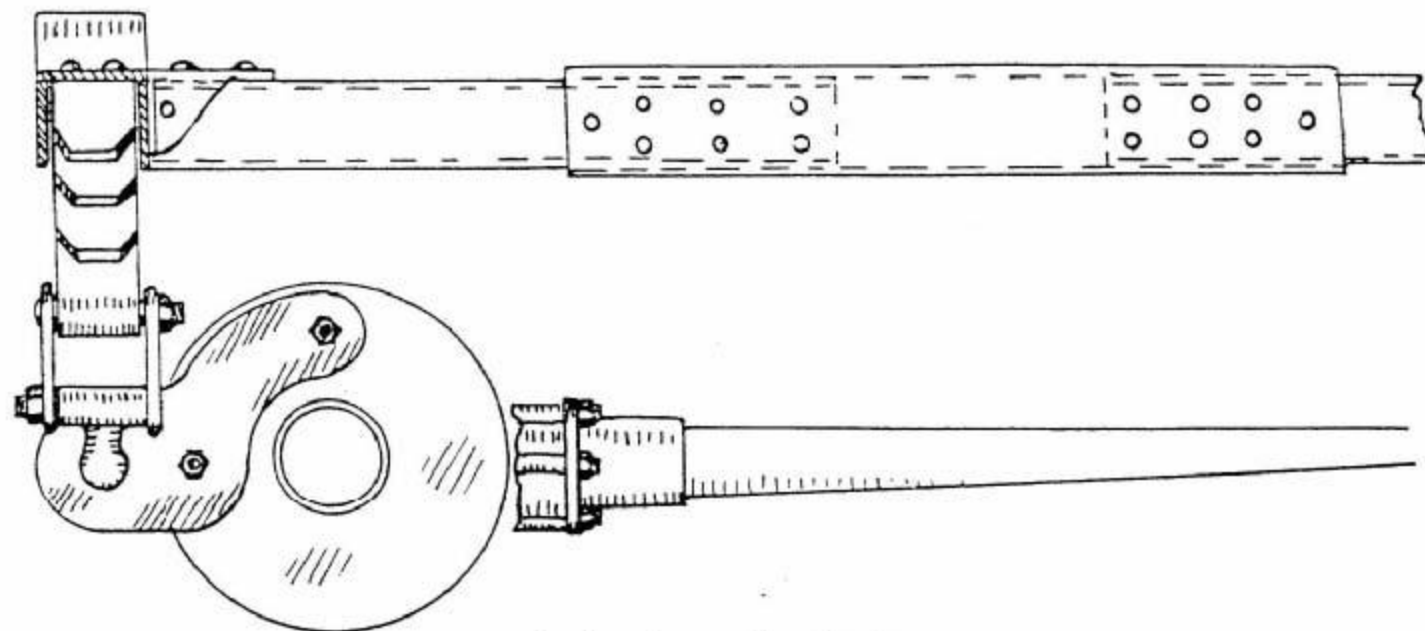


Laurel Frame Inserts Lower Rear of Speedster Chassis





Lima Front and Rear Underslinging Fixtures

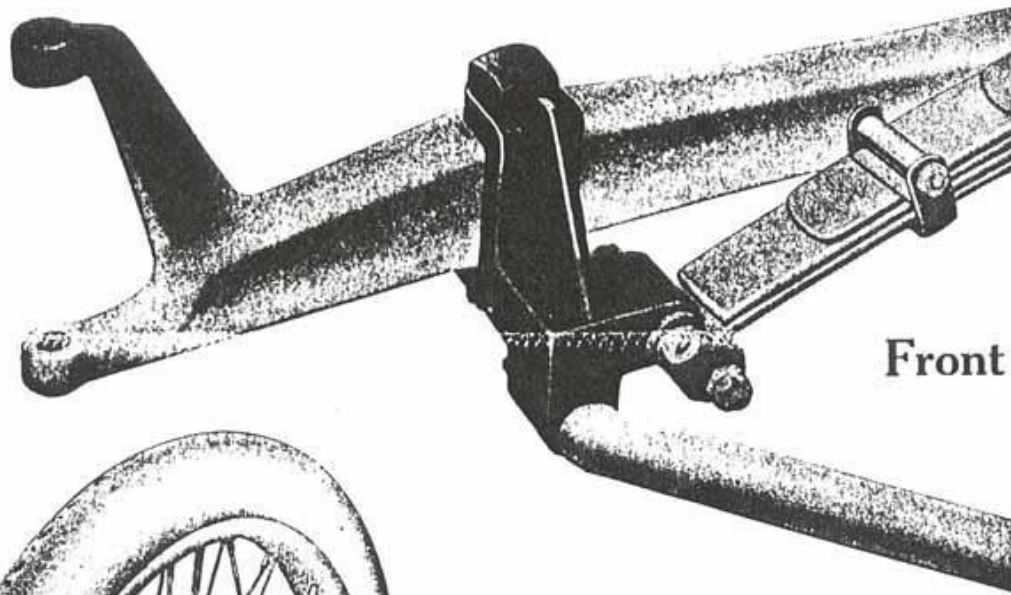


Jennings Lowers Rear Brackets

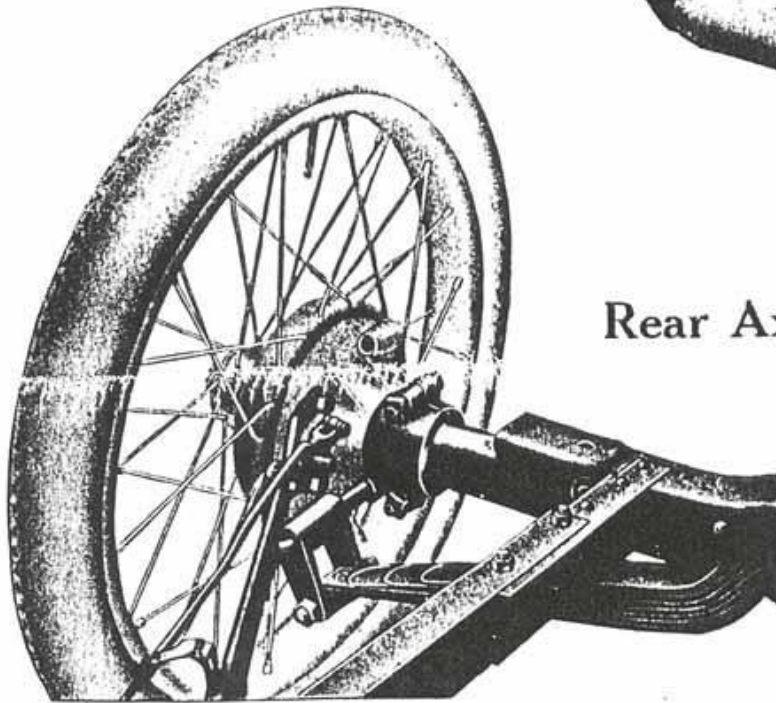


# CHASSIS UNDERSLUNG PARTS FOR FORDS

DROP FOUR INCHES



Front Axle



Rear Axle

---

---

Price Complete Set Only

**\$35.00**

---

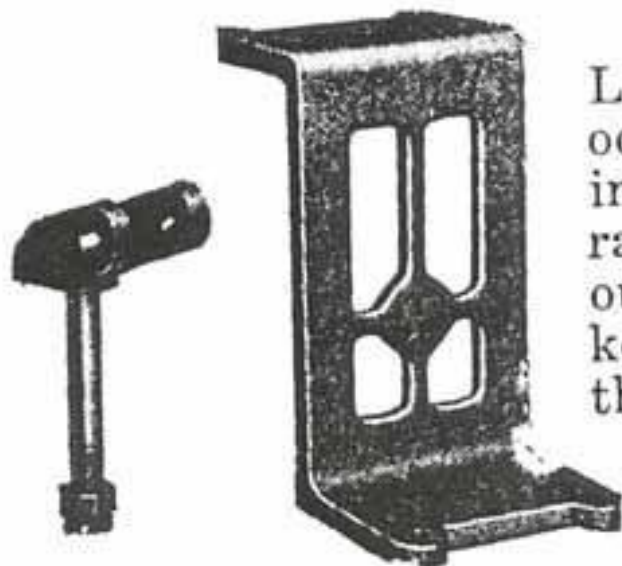
---

## ADVANTAGES

The advantages of Laurel Parts for undersliding Ford chassis over all other designs is apparent to the mechanic and the car designer from the illustrations of the installation of these parts shown above.

There are three points to be considered in the purchase of Undersliding parts. First, the safety which goes with a lower center of gravity. Second, to obtain easy riding qualities in a car when chassis is lowered. Third, ease in installation.

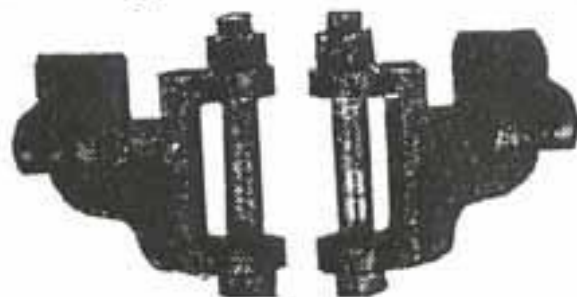
We know of no other parts designed for this purpose which gives to the buyer the above essentials. You will note from the illustrations that the car owner obtains full spring suspension both front and rear with our undersliding parts installed and the car if anything, rides much easier when underslung with Laurel designed Parts than before the change was made. The manner in which a car holds the ground on race track or road at any speed gives to the driver confidence and an assurance of safety, and the easy riding qualities of the Laurel Underslung Ford over the roughest roads is a source of great pleasure and delight to the owner.



Latest, best method of underslinging front end of racing cars. Take out all side sway, keep spring over the axle. Made of high-grade steel forgings.

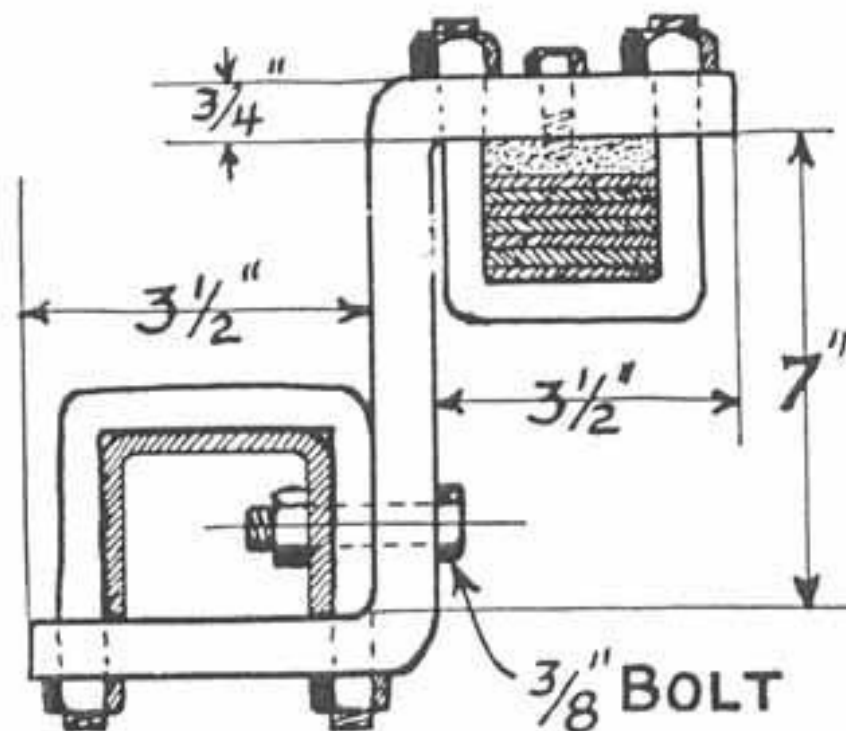
No. 250—Per set .....\$16.00

## Manganese Bronze Front Brackets

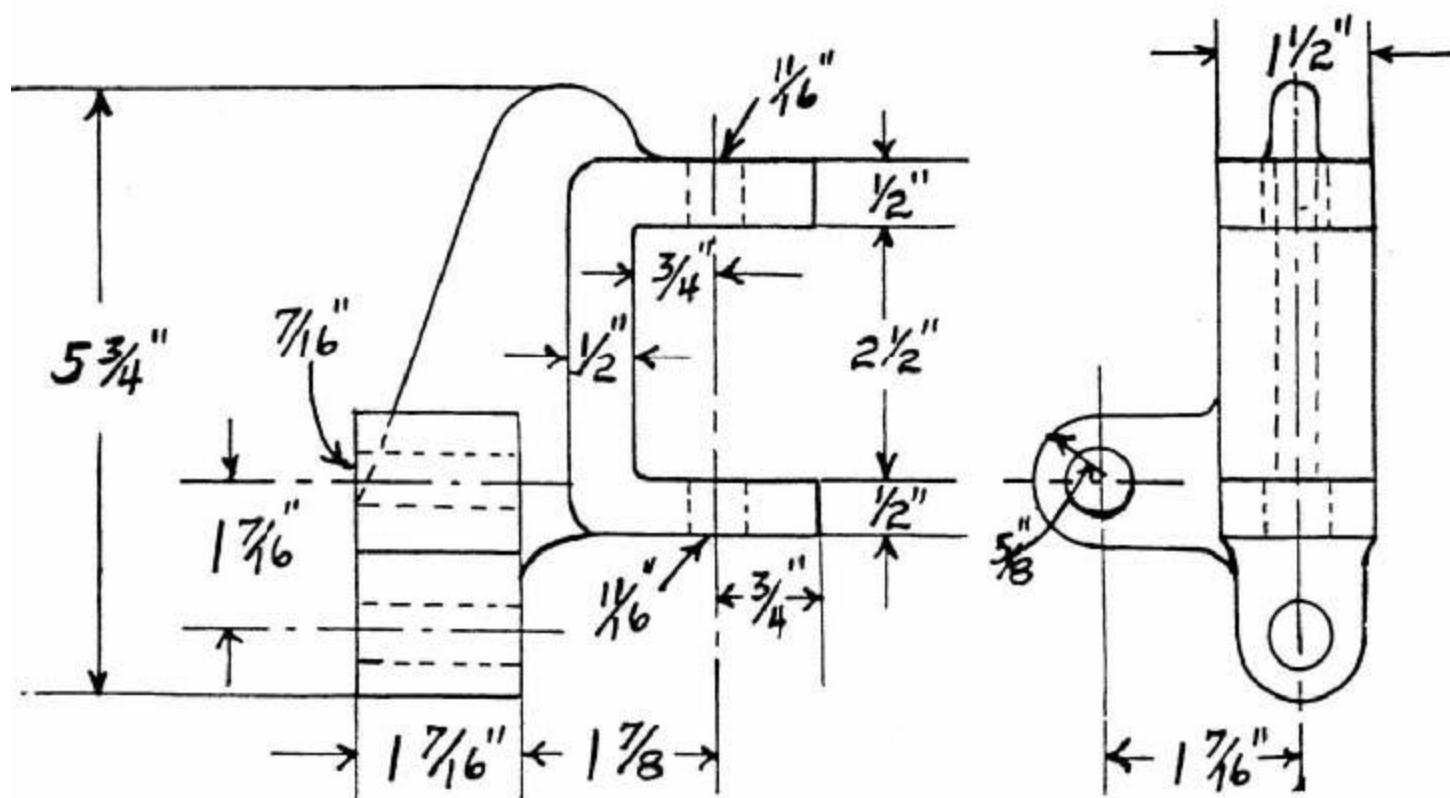


Underslung. Very strong. For racing cars or speedsters.

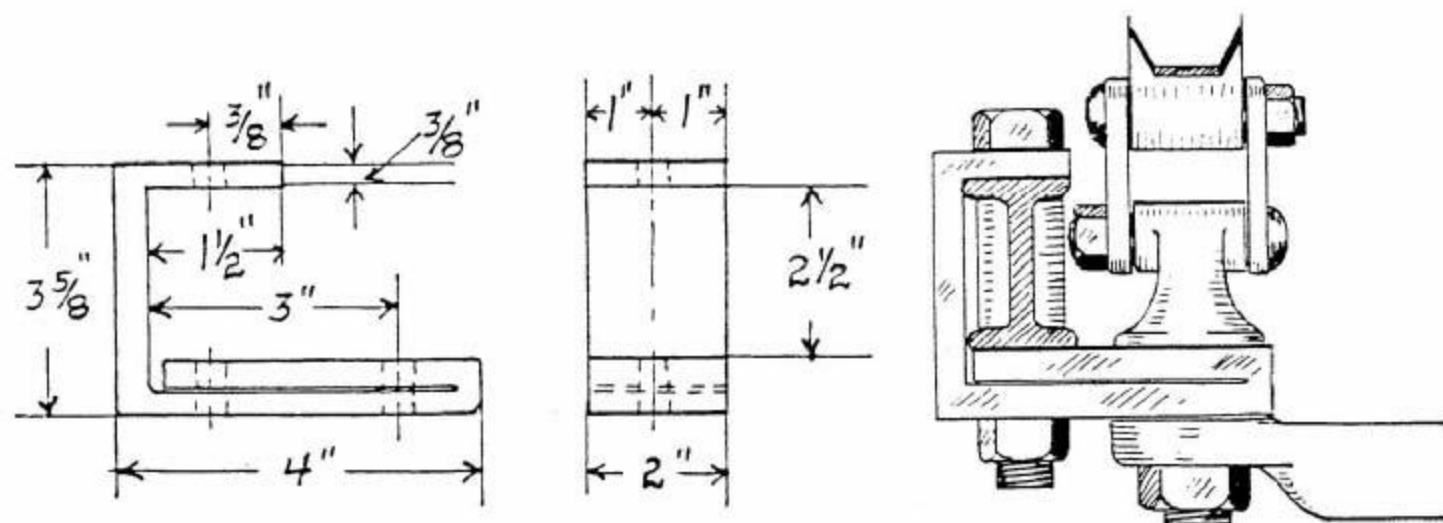
No. 251—Per pair .....\$12.00



Sketch No. 23.

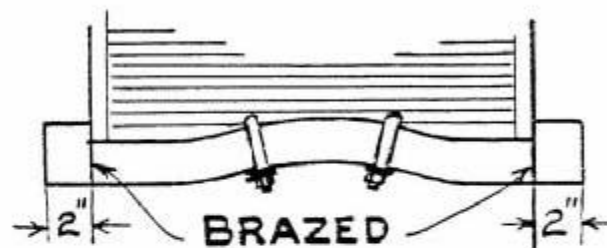
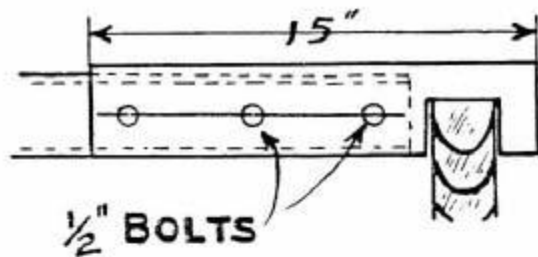


Laurel Front Brackets

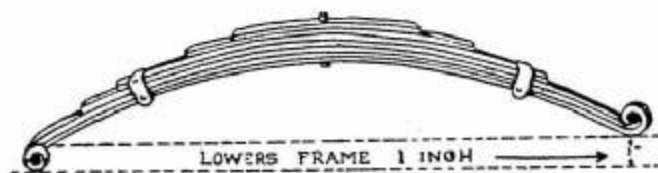


Strap Front Brackets

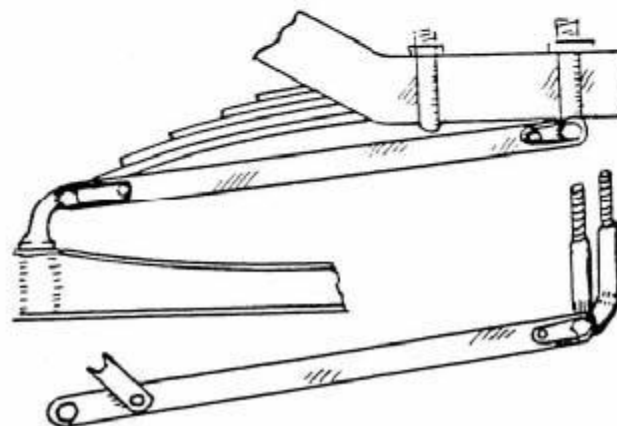
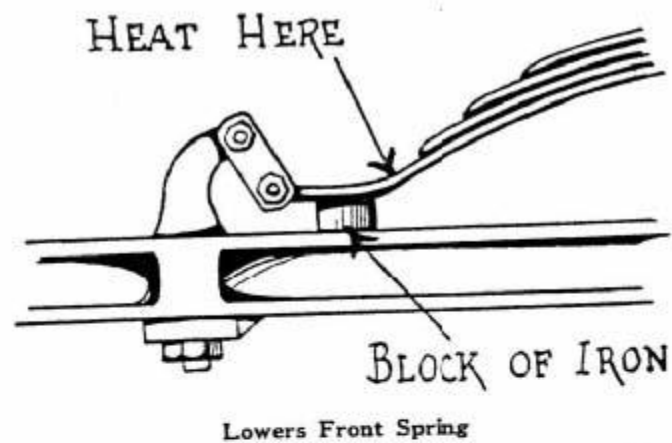




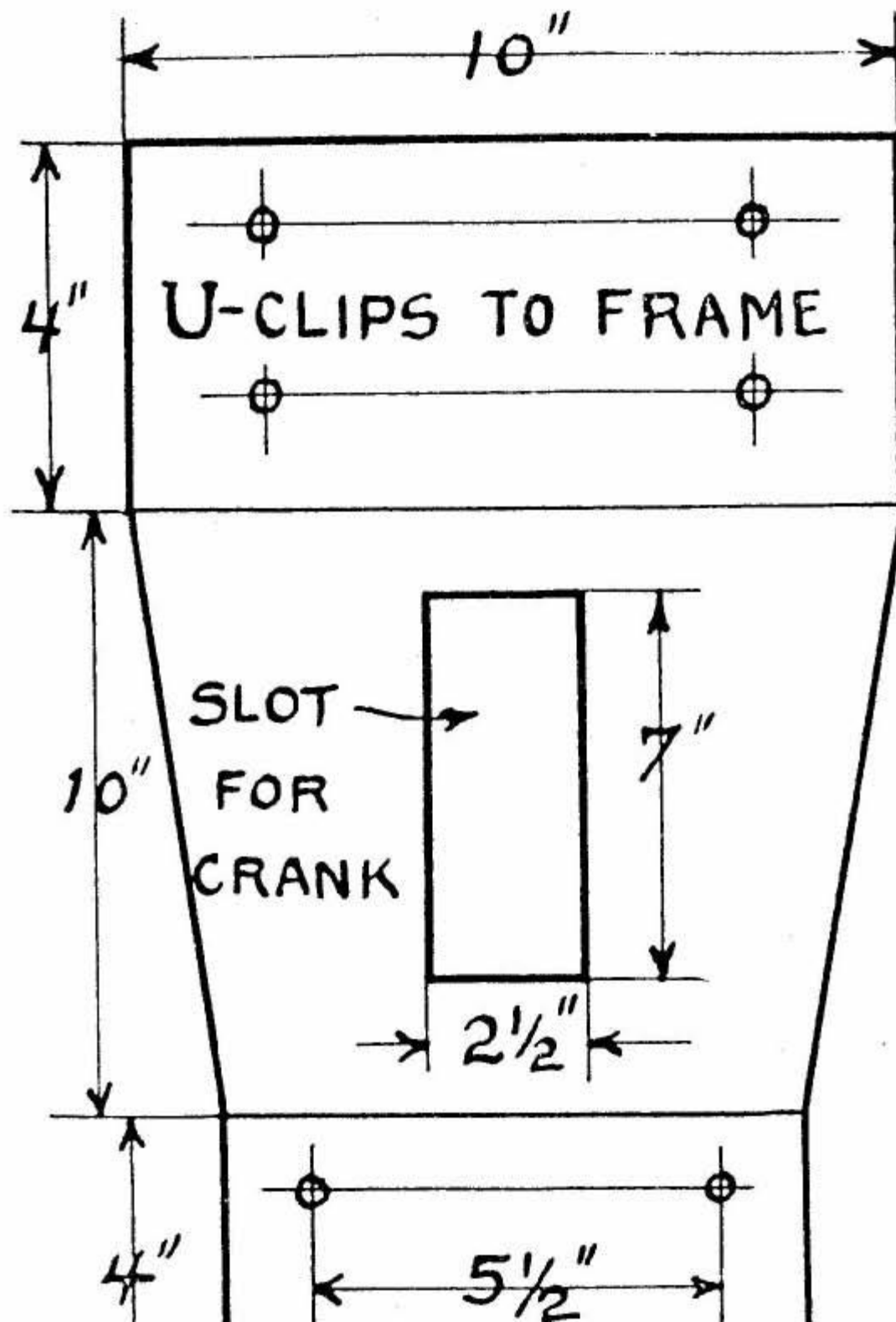
Sketch No. 34.

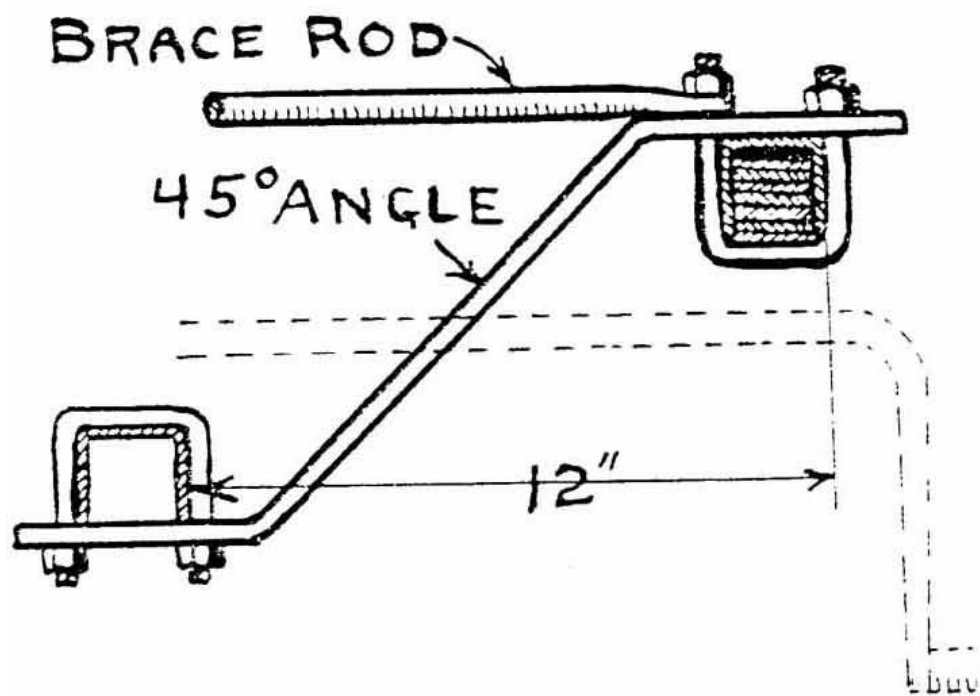


Reverse Spring Ends

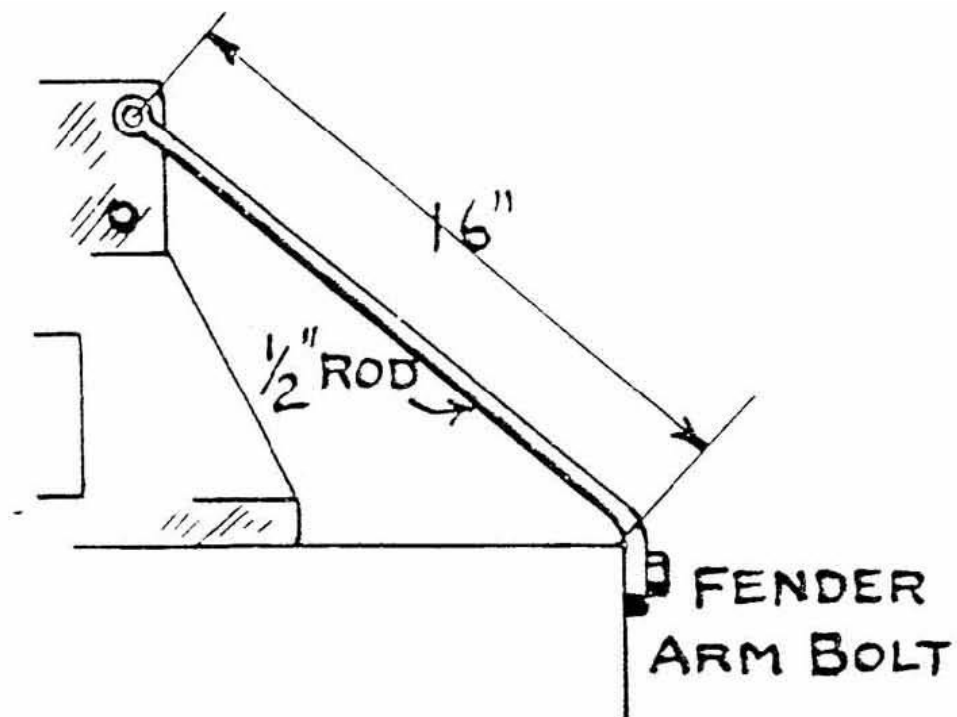


Cross Radius Rod

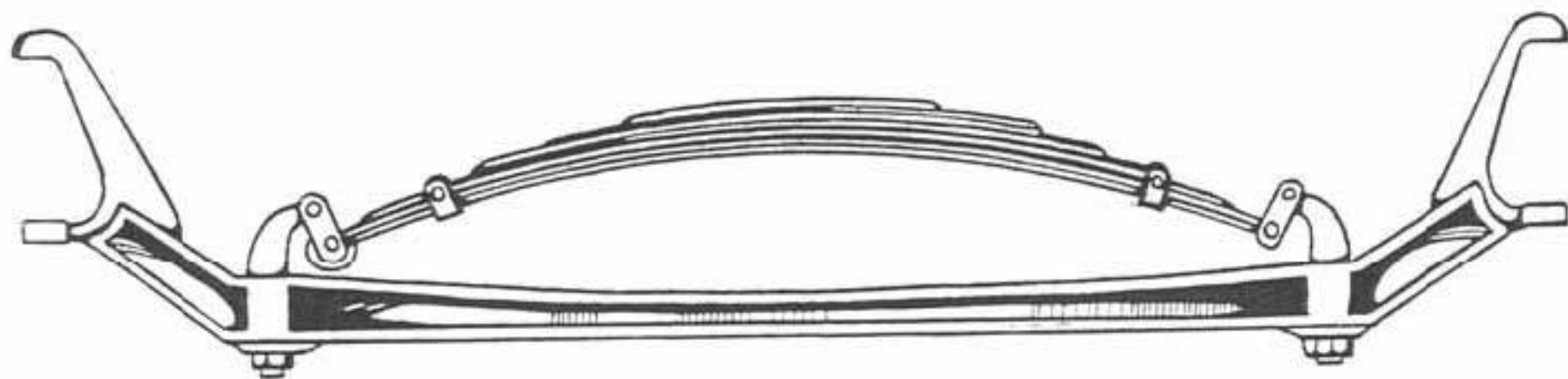




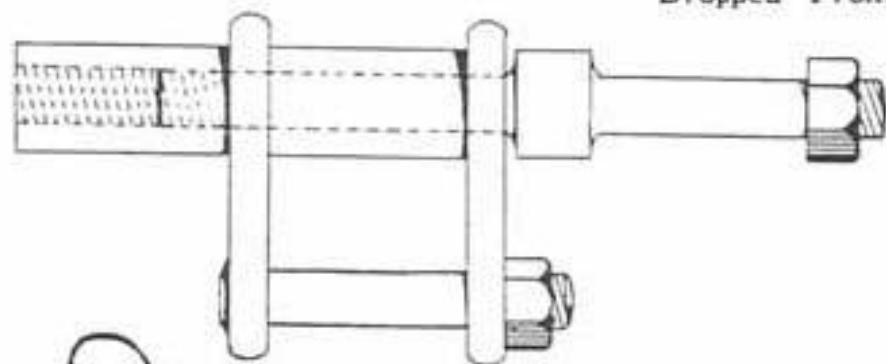
Number 8.



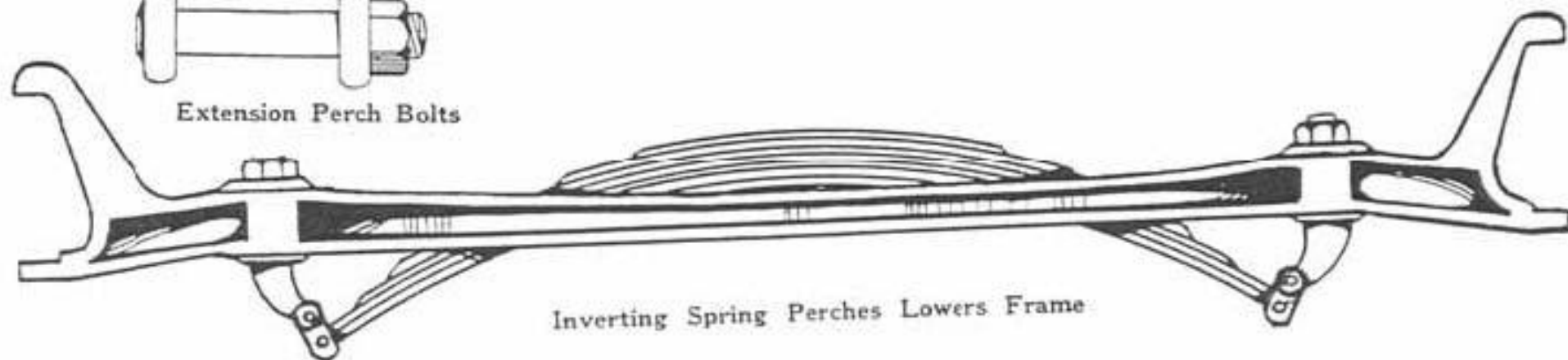
Number 10.



Dropped Front Axle Is Easily Fitted

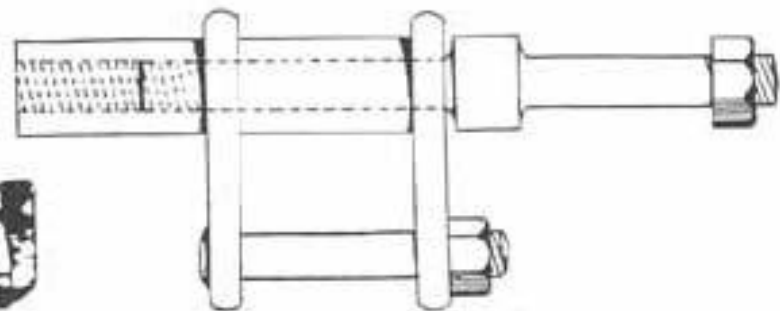
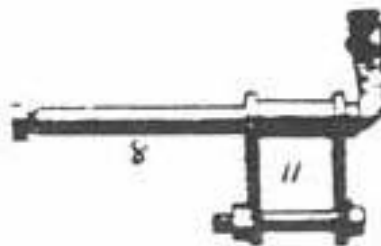


Extension Perch Bolts

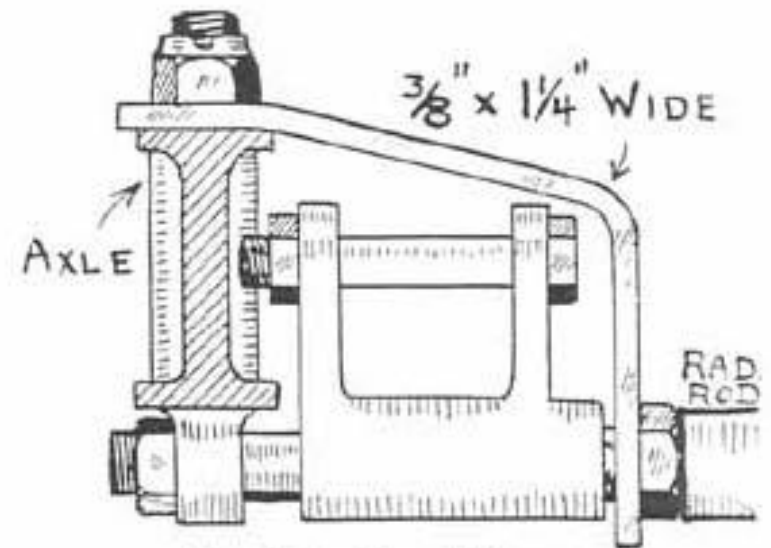
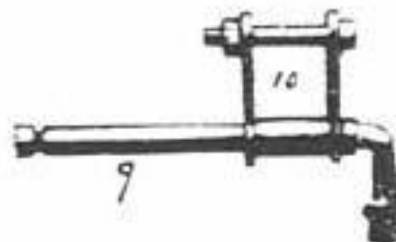


Inverting Spring Perches Lowers Frame

# SPEEDWAY MOTORS



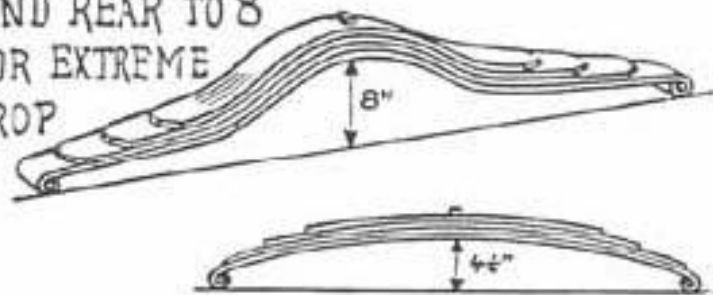
Extension Perch Bolts



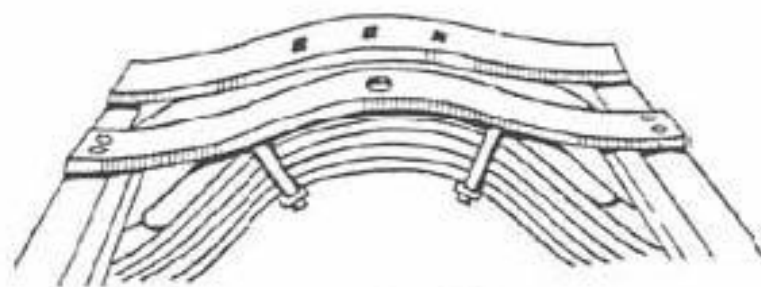
Speedway Front Hanger

And Guaranteed Underslung Parts Built of Strongest Material

SET FRONT TO  $4\frac{3}{4}$ "  
AND REAR TO 8"  
FOR EXTREME  
DROP



Changing Camber of Springs



Hold Rear Spring



CRAIG-HUNT, Inc.

FORD SPEED SPECIALTIES

Indianapolis, Ind.

U. S. A.

BUILDING

# Sport Cars and Speedsters

OF CLASS *from Fords*

## UNDERSLING YOUR FORD

IN order to make a racy speedster with your Ford with road safety, class and speed, it is necessary to **lower the frame and body line**. All Ford track racers of merit are **underslung**. The Craig-Hunt underslung parts were developed by Mr. Hunt in racing, assisted by a Ford factory engineer. It is instantly recognized to be the simplest, cheapest and easiest to install of any method, is rigid and correct in design. No give nor sway at any speed. Holds car firmly to road.

CRAIG-HUNT  
USE ONLY ONE QUALITY  
—ALWAYS THE BEST  
OBTAINABLE

STRONGEST AND  
EASIEST TO INSTALL



Patents Pending

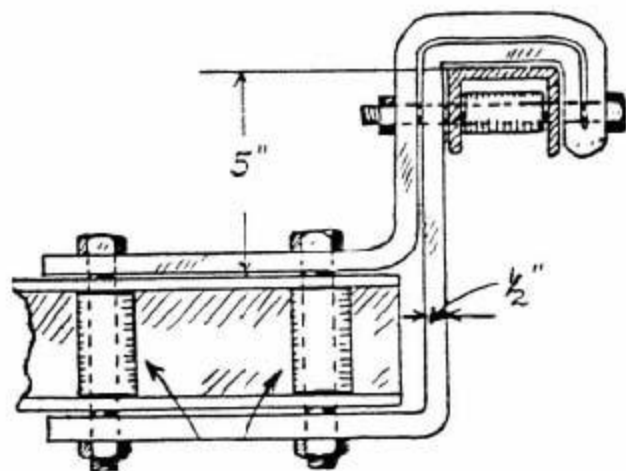
NO CUTTING OF  
FRAME  
STRAIGHT LINE DRIVE

PARTS ARE COMPLETE—  
NOTHING MORE TO BUY

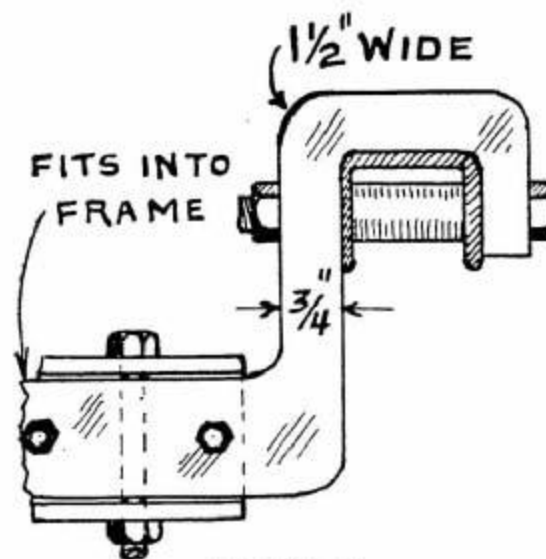
PRICE, WITH COMPLETE INSTRUCTIONS, \$20.00

"Makes a light Ford Speedster hold the road equal to the best race cars built."—*Harvey, of Chicago.*

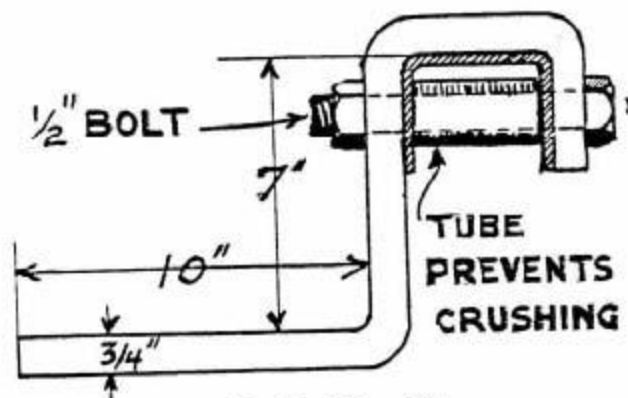
"No class can be obtained in rebuilding a Ford into a sport car without them."—*Thomas, Indianapolis.*



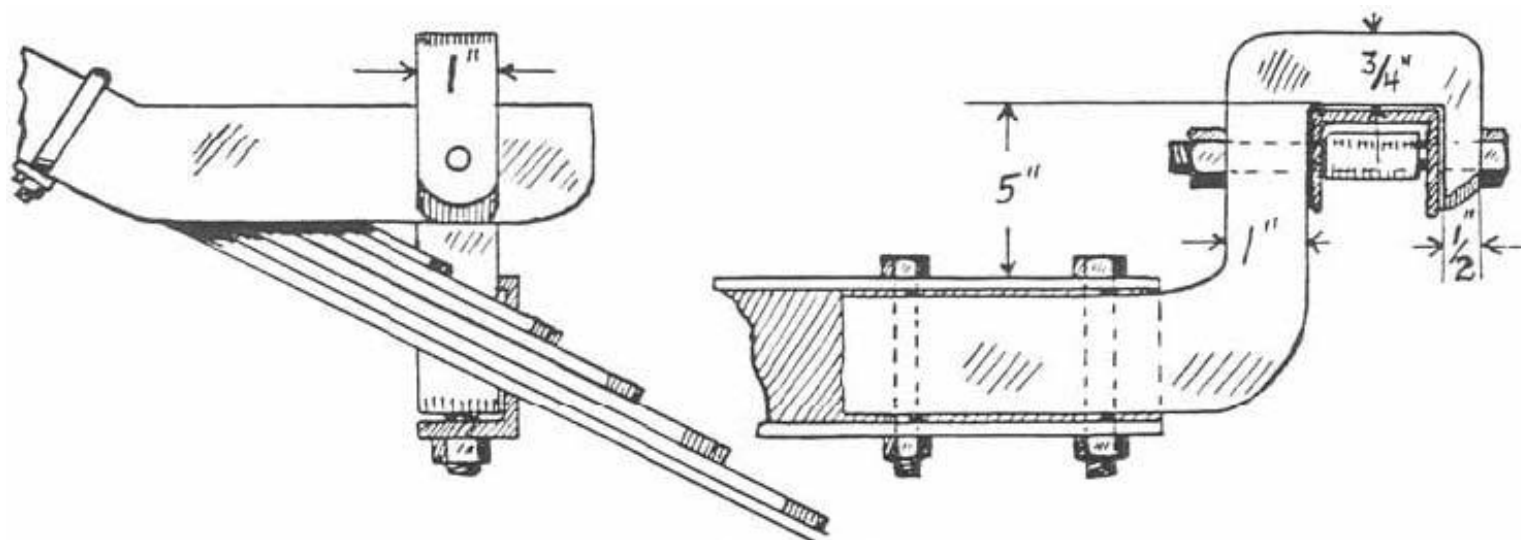
Strap Steel Rear Bracket



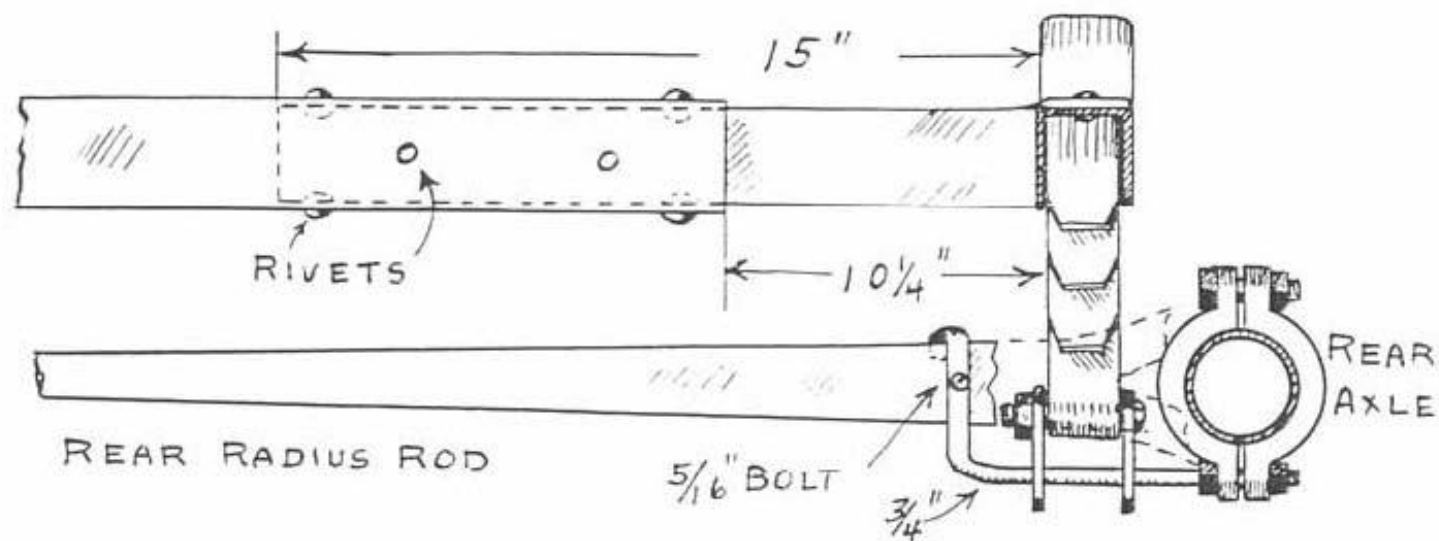
Number 5.



Sketch No. 26.



Forged Iron Brackets



LAUREL - New Type Underslinging Brackets for Rear.