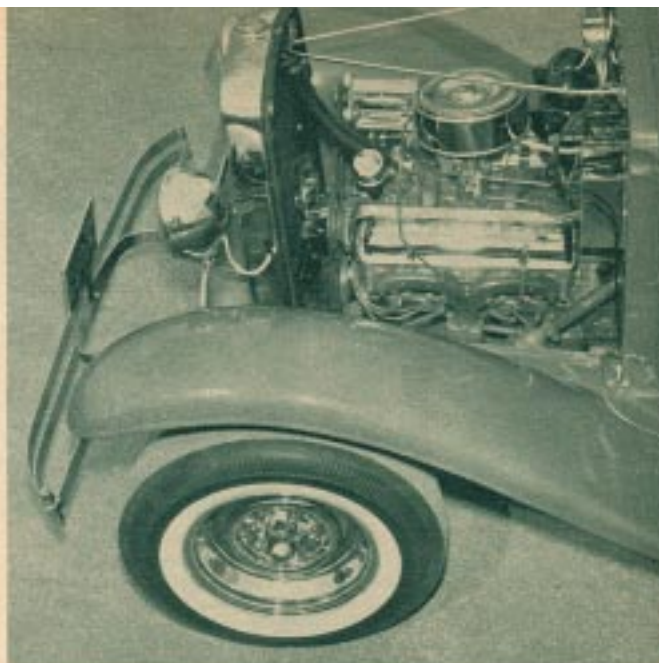




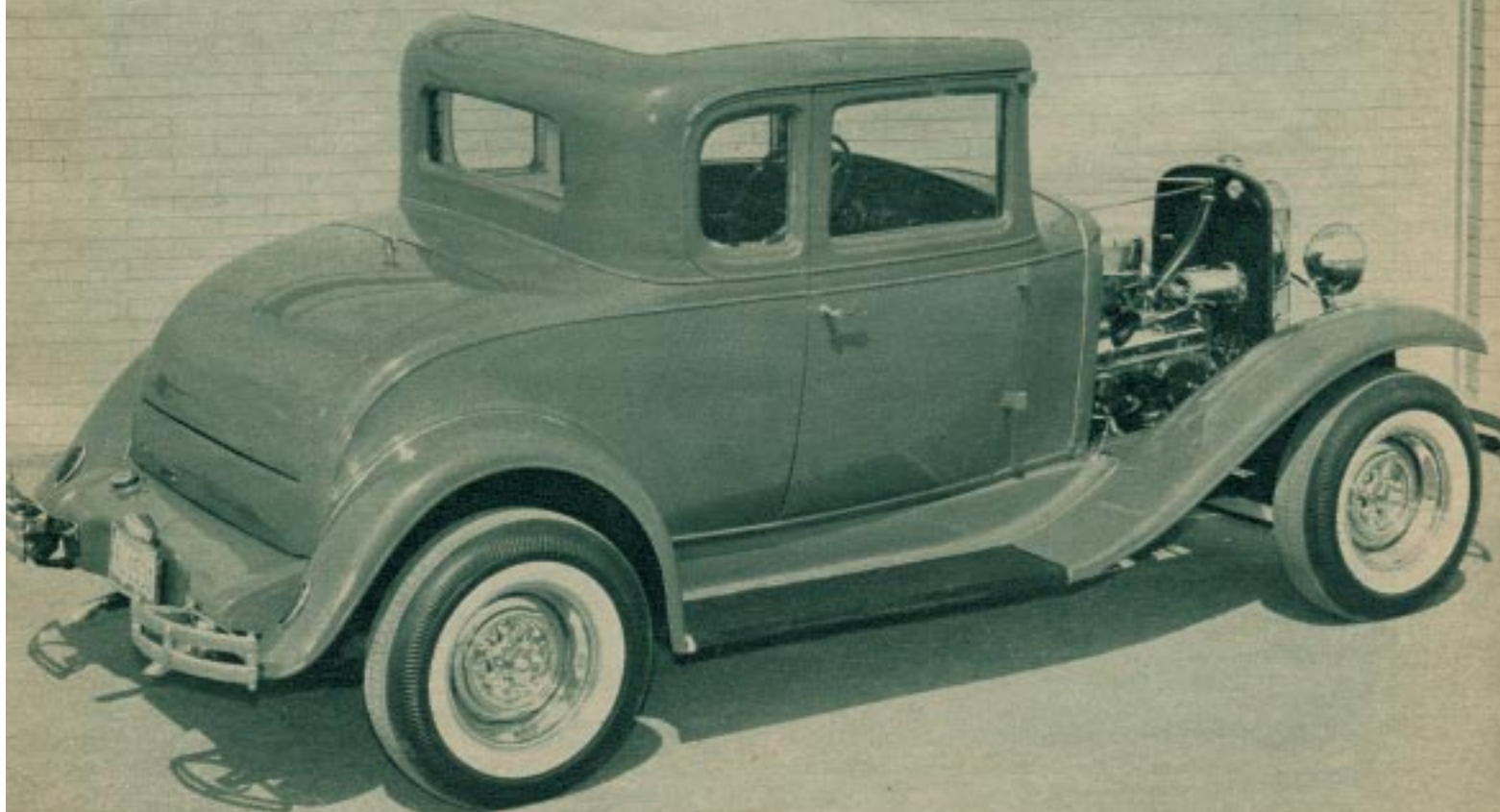
STOCK LOOKING BUT MODIFIED

Jerry Zeschin was a hot rod enthusiast for five years before he finally built his first rod. It consists of Chevy parts from '31 to '58

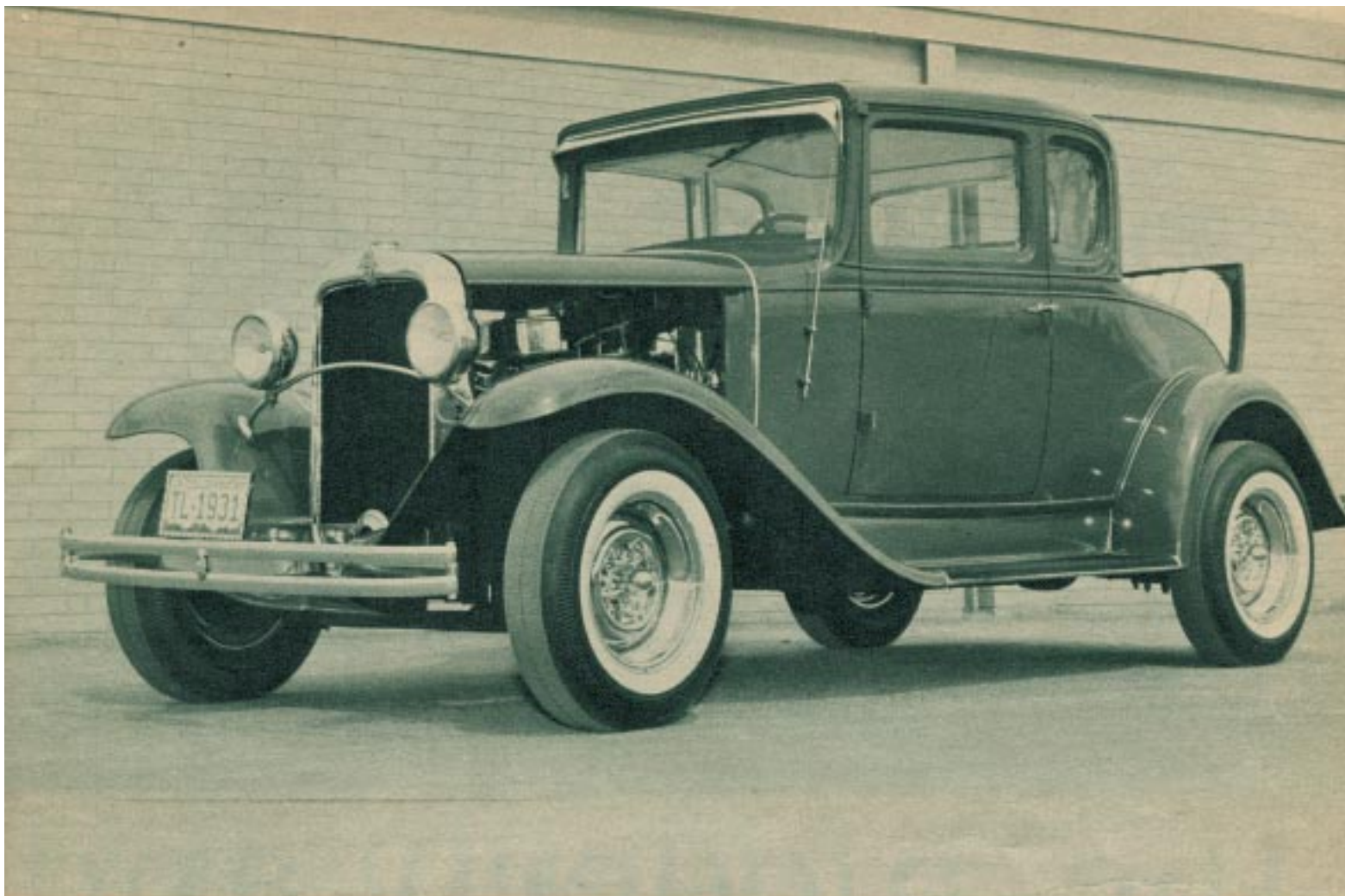


Sitting between the '31 Chevy frame is a stock '57 Chevy mill. The chroming was slight but tastefully done. The engine is bolted to a '57 Chevy transmission which has a modified floor shift.

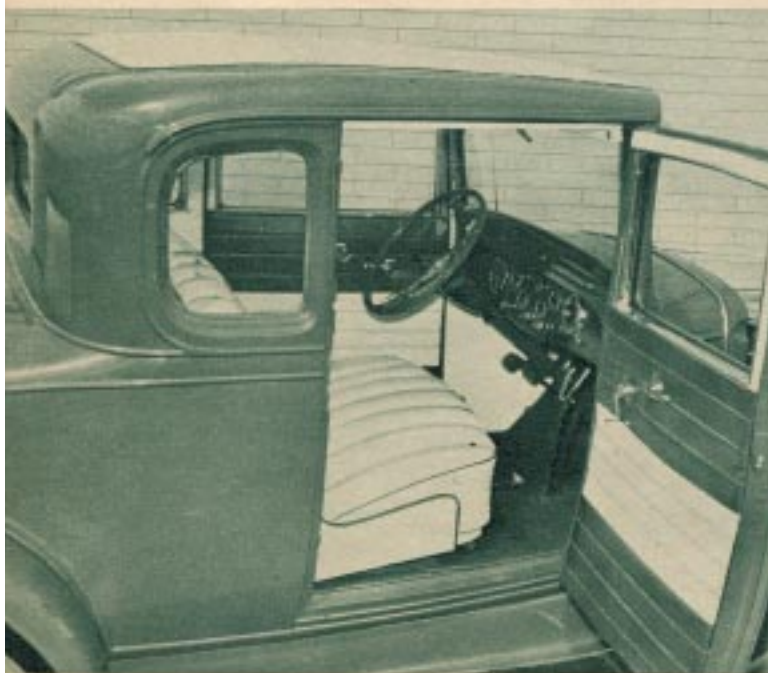
Clean body lines are accented with chromed reversed wheels and teardrop shaped '39 Ford tail lights. Bumpers in the front and rear are stock. The painting was done in red enamel by Brook of Brighton, Colorado. All the chroming was done by Denver Bumper and to date Jerry has \$3000 invested in his coupe. Out of three shows it has taken first and second places, all in Colorado.



PHOTOS BY WINFRED FLATT



Brakes on the coupe are '36 Chevy and all the front and rear suspensions are stock '31. The tires up front are 6:70 x 15 and rears are 7:10 x 15 for more traction. The steering is from a '53 Ford pickup and the headlights are seal beams wired to the 12-volt system. Side panels were eliminated to show off the engine compartment and to help keep the engine cool while driving.



Sharp looking upholstery was done in red and white Naugahyde by owner. Steering wheel is '58 Chevy Impala and dash gauges are Stewart-Warner. Swing pedals are used and hand brake is stock.



Rumble seat was upholstered in same theme as interior in red and white. Rear bumpers were rechromed and license plate was set in center, mounted off gas tank. Notice neat exhaust tips.

ROTH'S MYSTERION •

HOW TO: CUSTOMIZE
A CAR PAGE 12

ROD & *Custom*

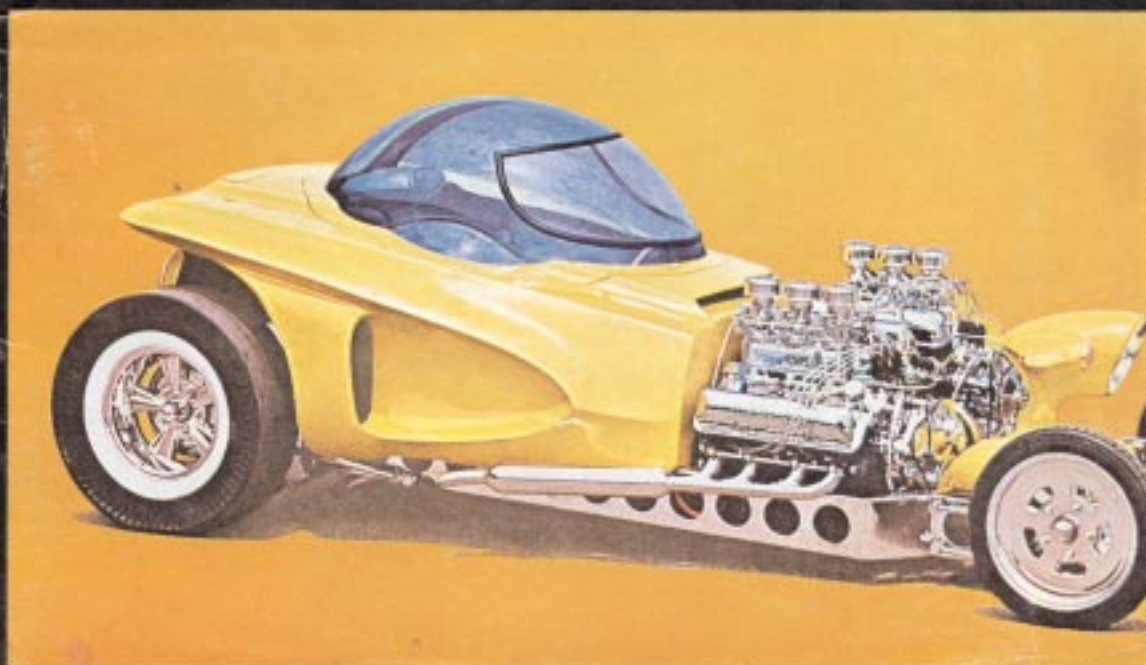
SEPTEMBER 1963 35¢ 40¢ IN CANADA

MODEL RAMA

HOW TO CHOP A TOP . PART II
SCALE RACING HOOLIGAN FORD



SCALE DRAG INFORMATION



PLUS:

HOW TO INSTALL
A NAUGAHYDE
HEADLINER

BILL TRAYLORS
TOP DRAG
MACHINE
IN ACTION
page 26